

## PV-ezRack SolarTerrace II-F



電話：+886 2 8991 2796

傳真：+886 2 8991 9298

統編：28712141

網址：[www.jdauspice.com](http://www.jdauspice.com)

信箱：[service@jdauspice.com](mailto:service@jdauspice.com)

24246 新北市新莊區中華路二段288號3樓  
3F., No.288, Sec. 2, Zhonghua Rd., Xinzhuang  
Dist., New Taipei City 24246, Taiwan R.O.C.



# PV-ezRack SolarTerrace II-F

PV-ezRack SolarTerrace II-F is a pre-assembled ground mount system suitable for utility scale PV installations in high wind load and snow load regions. This quality frame is trimmed at every angle for fast deployment reducing labor costs. It was designed with a unique post profile which allows reduced embedment and therefore saves on material and labour. Furthermore it has an industry leading 80µm hot dip galvanization and 10µm anodization thickness as standard which ensures a long life cycle. These features, combined with its high grade of pre-assembly make SolarTerrace II-F one of the best ground mount system you can find.

## Main Benefits

### Reduced labor costs

Through our unique, patented component design and highly pre-assembled supports, labor time and costs are greatly reduced.

### Robust solution

Our single C-Post solution was designed specifically for ramming, which makes the ramming could be completed in a short time and helps to reduce labor cost. The unique sectional profile results in an increased friction against up-lift force comparing with conventional standard posts or I-beams, and they are all manufactured from high strength steel Q355B, which provides robust support for the whole mounting system.

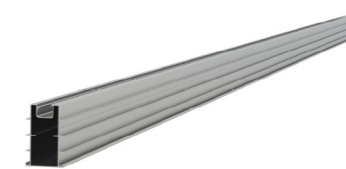
### Wide range of adjustments

As ramming can never be 100% accurate, the Post head is designed with sufficient horizontal rotation and vertical adjustments. This combined with a generous design tolerance levels makes it easy to get the panels perfectly aligned even if the ramming isn't 100%. With the optional East-west adjustable bracket, STII-F can conquer even the steeply sloped land.

Our unique C-Post was designed specifically for ramming. As a result it has a unique design, a much larger surface area and has therefore more friction. As a result there is less embedment required than with standard I-beams saving valuable installation time and material. It is manufactured from high strength Q355B and with an industry leading 80µm galvanization thickness as standard which ensures robust structure and long-life cycle.

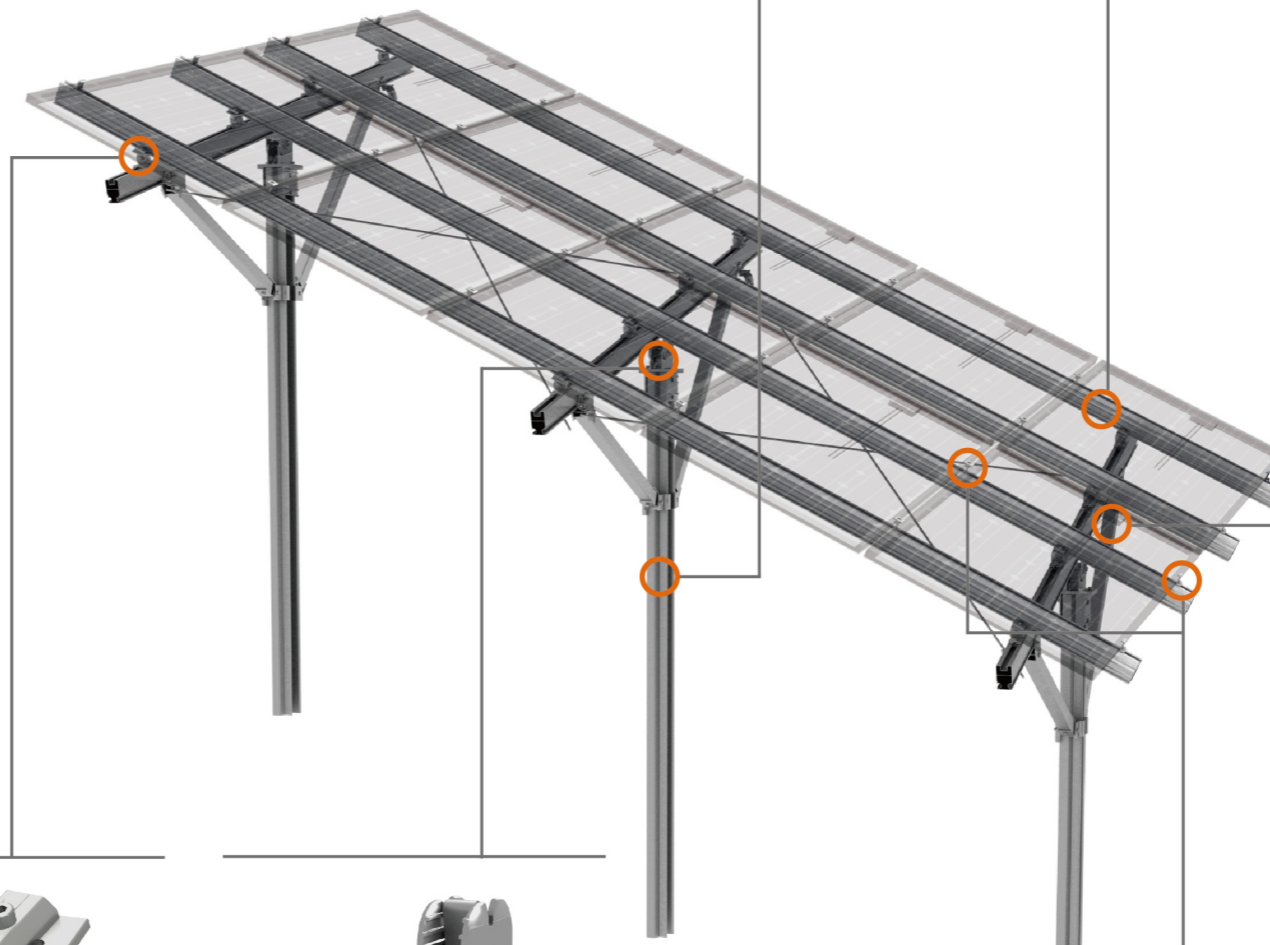


CP-D/A/Q  
C-Post



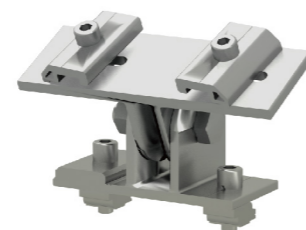
R-TR/100  
TR -Rail100

The innovative TR-Rail has been specifically developed for high load regions, which has a Z-Module channel for panel mounting and is secured with the Rail Clamps to the support legs.



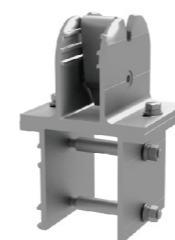
S-STIIF/S  
S-STIIF/D  
Support

The support legs of the STII-F are completely pre-assembled, they only need to be opened up and secured to the post brace and post head. The positioning rail clamps are already pre-installed\*\*, so you don't need to measure and mark the rail positions anymore. All this is saving valuable time in assembly and logistics, making it one of the fastest system in market. Available with different supports of 10 to 40 degree tilt angle for 60-cell or 72-cell panels.



BR-R110/EW/A

East/West Adjustable Bracket II (optional)  
The East/West Adjustable Bracket is an optional components designed with large rotation range along east/west direction, which is the best choice for PV installation on east-west slop.



PH-STII-F

Post Head for C-post  
The Post head is designed with sufficient horizontal rotation and vertical adjustments to ensure easy and quick installation on uneven ground.

## Available accessories

- Grounding/earthing
- Cable clips
- Cable trays
- Inverter/joint box bracket
- Rail caps

Contact us or one of our qualified resellers for a personalised quotation today.



## Inter and End clamps

The PV-ezRack Inter and End clamps offer a simple, easy to use and robust fixing of the PV panels (all sizes) using the patented Clenergy Z-module. Compatible clamps for thin film modules are available.